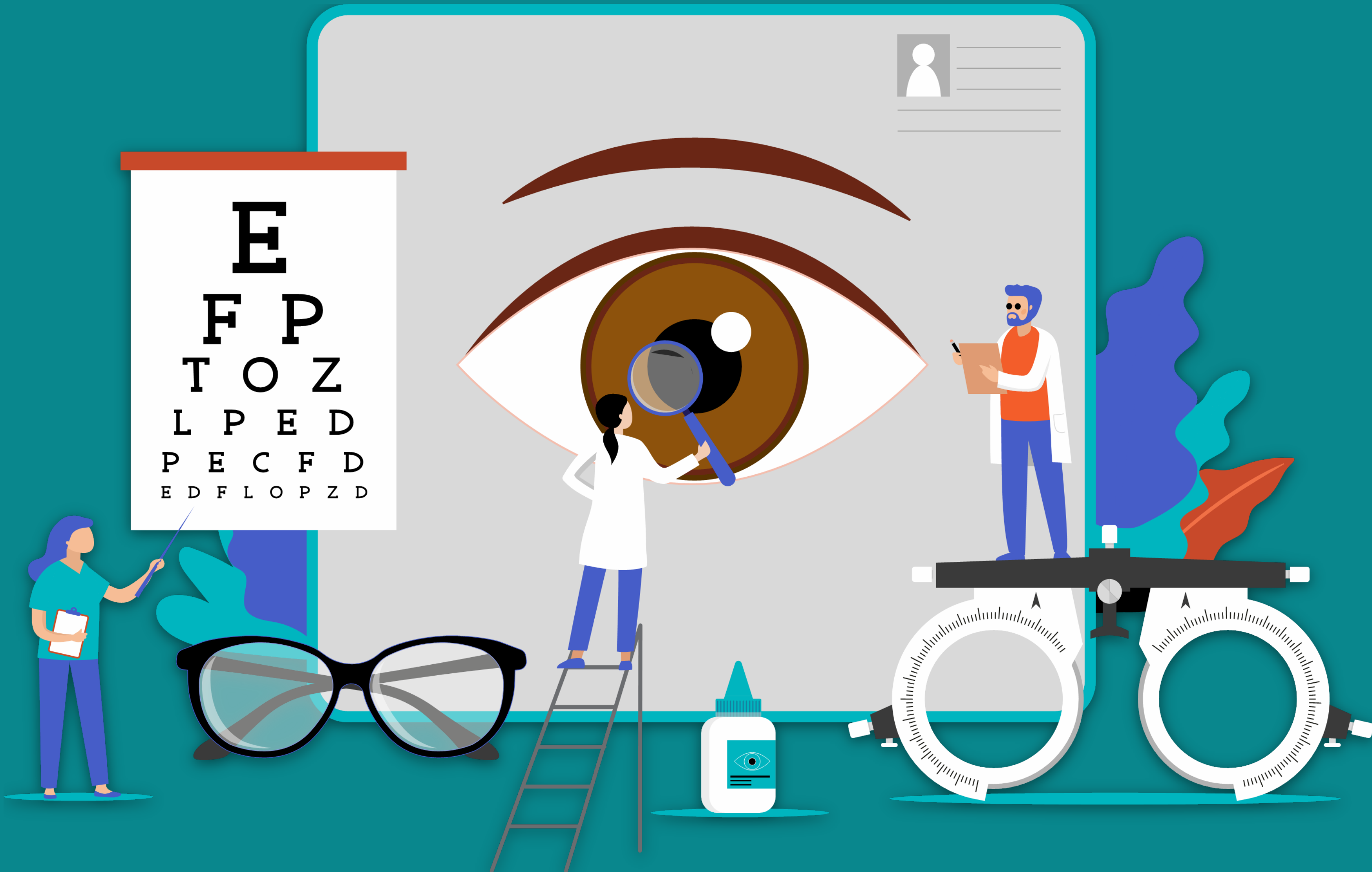


# UAW Region 8 Retiree Conference 2025



# Benefit Overview

Description	Benefit
Frequency - Once Every	
Eye Exam (including dilation)	12 Months from Date of Service
Spectacle Lenses	12 Months from Date of Service
Frame	12 Months from Date of Service
Contact Lenses (in lieu of glasses)	12 Months from Date of Service
Contact Lens Evaluation and Fitting	12 Months from Date of Service
Copayments, Allowances, and Discounts	
Eye Exam (including dilation)	\$0
Spectacle Lenses	\$0
Davis Frame Collection	
Fashion	\$0
Designer	\$15
Premier	\$40
Non-Collection Frames	\$40 allowance
Non-Collection Frames (remaining balance)	20% off
Contact Lenses	\$75 allowance
Contact Lenses (remaining balance)	15% off
Contact Lens Evaluation and Fitting	\$40 allowance

# Lens Additives

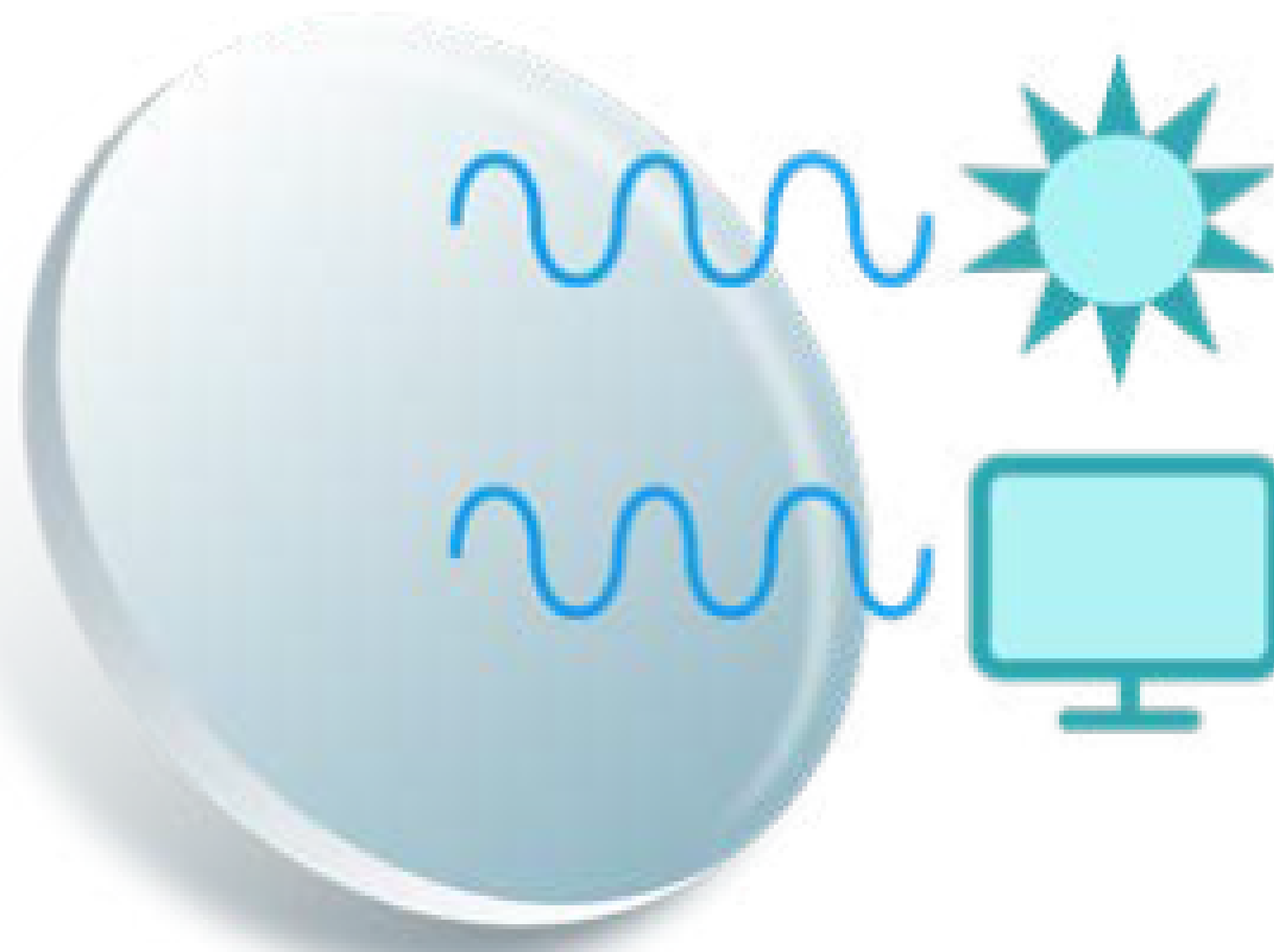
Lens Option	Copay
Polycarbonate	\$35
Progressive	
Standard	\$0
Premium	\$105
Ultra	\$140
Ultimate	\$175
Anti-Reflective	
Standard	\$40
Premium	\$55
Ultra	\$69
Ultimate	\$85
Transitions	\$70
Polarized	\$75
High Index 1.67	\$60
Blue Light Filtering	\$15

# A Guide to Lens Types



## Anti-Reflective Coating

Reduces reflective light by eliminating reflections from both sides of the lens, which can enhance comfort, reduce eye strain and improve the cosmetic appearance of your eyeglasses.<sup>1</sup>



## Blue Light Filtering

Reduces the amount of blue light that reaches the eye, which can help minimize digital eye strain and improve sleep quality by blocking or absorbing blue light and UV light from screens.<sup>2</sup>



## Progressive Lenses

Corrects age-related farsightedness and provides a smooth transition from distance vision to near vision without the visible line found in bifocal lenses.<sup>3</sup>



# Out of Network Benefits

Description	Reimbursement
At least one provider within 25 miles of the member's zip code	
Exam	\$0
Frame	\$13
Single Vision Lens	\$13
Bifocal Lens	\$13
Trifocal Lens	\$13
Contact Lenses	\$37
Medically Necessary Contacts	\$52.50
No providers within 25 miles of the member's zip code	
Exam	\$45
Frame	\$49
Single Vision Lens	\$59
Bifocal Lens	\$79
Trifocal Lens	\$99
Contact Lenses	\$89
Medically Necessary Contacts	\$200

# Additional Benefits and Discounts

Benefit Type	Details
Additional discounts on glasses and sunglasses	50% off additional pairs of eyeglasses and sunglasses at Visionworks and 30% off at other participating providers on the same transaction. Otherwise, 20% off the provider's usual and customary rate may be available. Contact lenses may be available at a 10% discount.
Retinal Imaging	Members & dependents may receive a retinal imaging exam at participating providers at a discounted fee of \$39. The exam enables the retina, macula, blood vessels and optic nerve to be seen in wide angle, digital images without using dilation drops.
Breakage warranty	All eyeglasses come with a breakage warranty for repair or replacement of the frame and/or lenses for a period of two years from the date of delivery. The two-year breakage warranty applies to all plan-covered eyeglasses (i.e., all spectacle lenses, Davis Vision Exclusive Collection frames).



# Creating and Accessing Your Member Account

Our website gives you quick access to your vision benefits information. Member account information is shared by all covered family dependents. Your member account includes useful tools allowing you to access your member ID card, find in-network eye care professionals, and view your list of benefits.

## Step 1

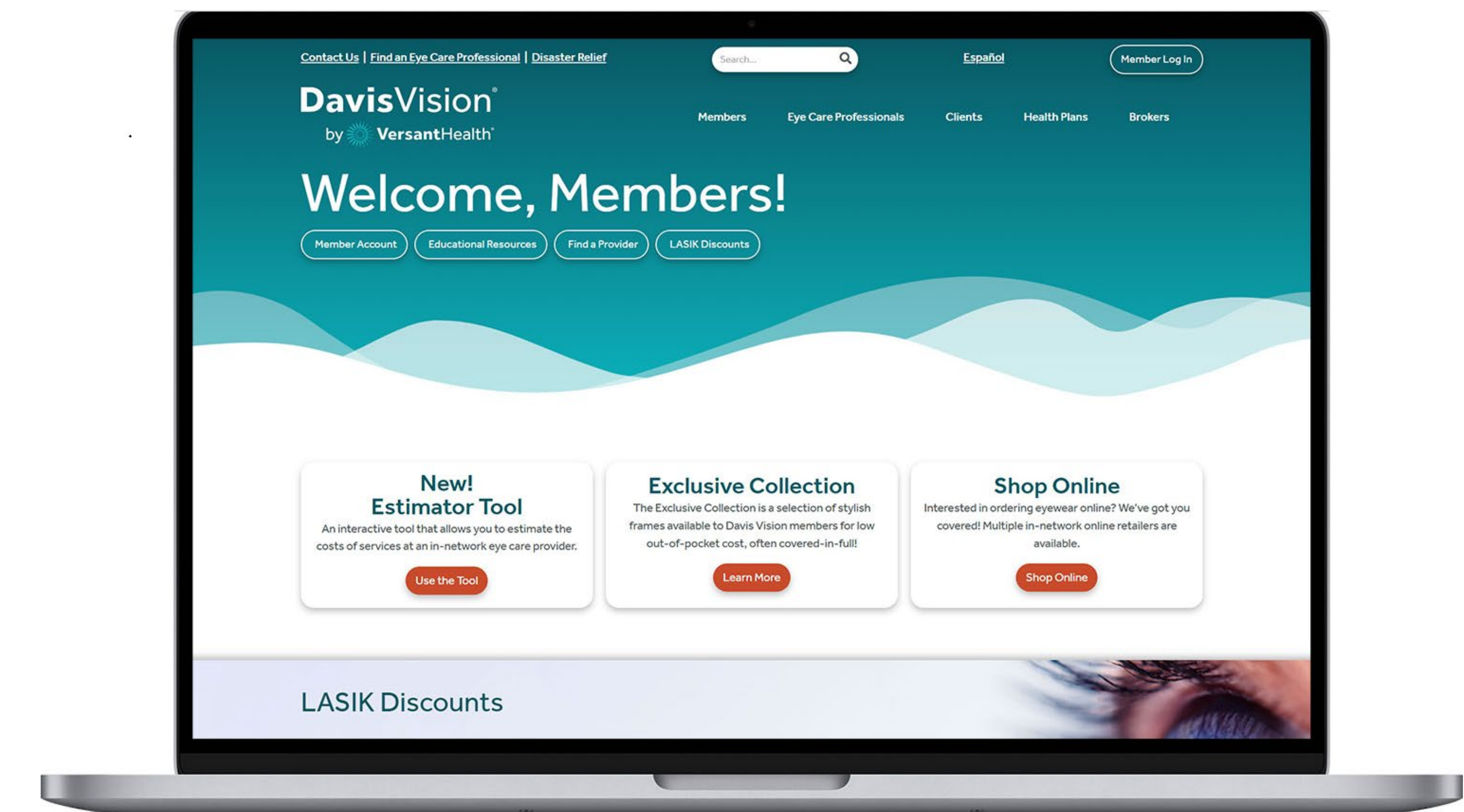
From any page on **davisvision.com**, select “Member log in” from the navigation.

## Step 2

If you have already set up your account, enter your username and password. Otherwise, click “Register new account.”

## Step 3

From the member registration page, the primary policy holder can set up an account with their own username and password and have immediate access to the secure member area of the website.



# Utilizing the Client Code: 3642

The 'Client Code' can be used to access generic information such as Benefit Details, Find a Provider, the Exclusive Collection Catalog, and the Out of Network Claim Form

## Step 1

From any page on **davisvision.com**, select "Member log in" from the navigation.

## Step 2

Enter Client Code 3642 into the box below (do not enter anything in the Username/Password)

## Step 3

Click 'Submit' to be logged into the portal

Password:

Submit

[Forgot username or password?](#) | [Register new account](#) | [Need help?](#)

Client code:

Submit



# Find a Provider

Required

✈️ Click here to use your current location

Location:

Place Name, Address, City, State or Zip

Radius (Miles):

- OR -

State:

Please choose a state

County:

Please choose a County

City:

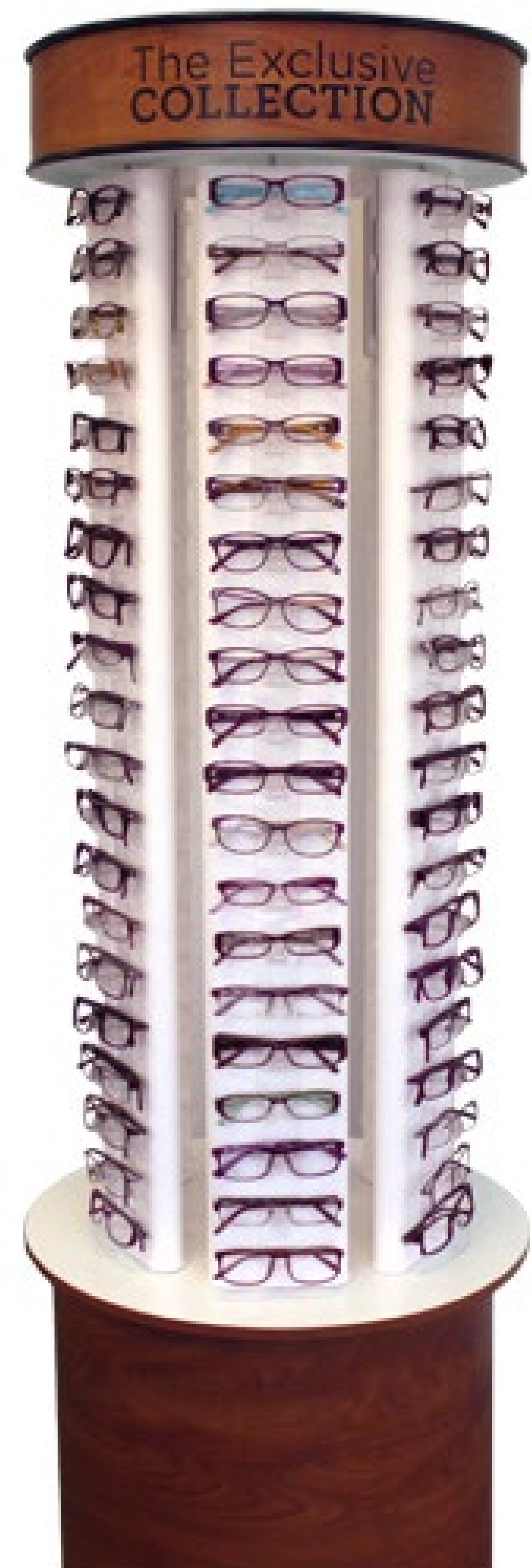
Please choose a City

Name		Address	Telephone	Services
DR WARREN A PAQUIN	[+]	501 VILLAGE GREEN PKWY STE 3 BRADENTON, FL 34209	(941) 792-7522	Full Service ✓★ 🦽👓
WARREN A. PAQUIN (OD)	[+]	501 VILLAGE GREEN PKWY STE 3 BRADENTON, FL 34209	(941) 792-7522	Full Service ✓★ 🦽👓

\*Indicates  
Davis frame  
collection is  
available

# Steps to Receive Service

- 1) Find an in-network provider either by calling Davis Customer Service or using the website (in-network providers in all 50 states, including Region 8)
- 2) Provide your unique Davis Vision ID number that starts with '789'
- 3) Pay any remaining out-of-pocket at the time of service – no claim to file



# Have Questions?

We Have Answers!

## Join Us Online

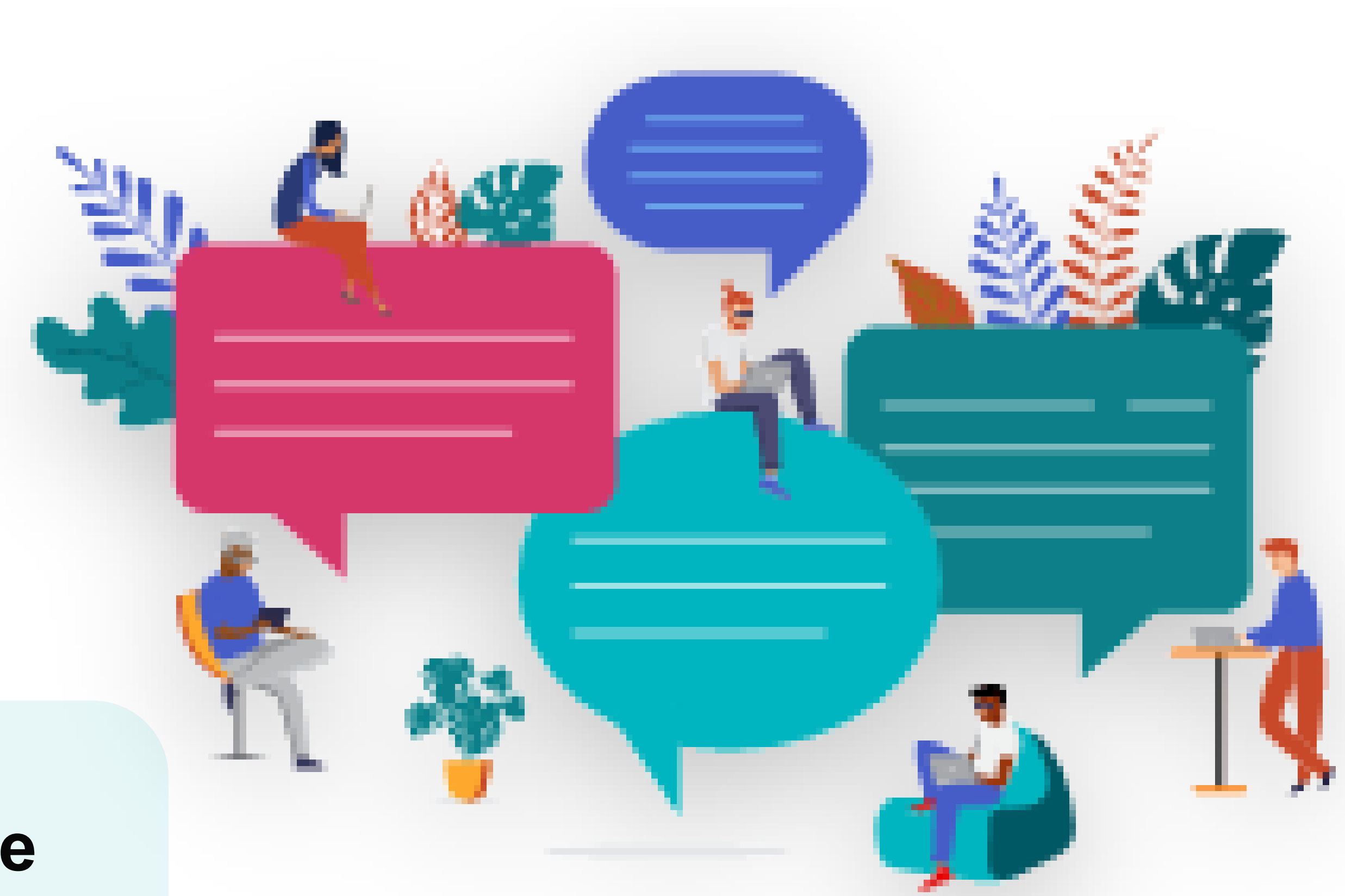
Visit [davisvision.com/member](https://davisvision.com/member)  
Register as a member or use  
client code: 3642

- Benefit summaries
- Eye care professional locator
- Explore the Exclusive Collection of frames
- Brief educational videos
- Frame try-on tool

## Give Us a Call

Call dedicated customer service  
line:  
**1 (888) 234-5164**

- Live U.S.- based support:  
Monday – Friday: 8am – 11pm<sub>EST</sub>  
Saturday: 9am – 4pm<sub>EST</sub>  
Sunday: 12pm – 4pm<sub>EST</sub>
- Automated service available 24/7





# Questions

